

RESEARCH LETTER

Open Access



# Implications of overestimated anthropogenic CO<sub>2</sub> emissions on East Asian and global land CO<sub>2</sub> flux inversion

Tazu Saeki<sup>1,2</sup> and Prabir K. Patra<sup>1\*</sup> 

## Abstract

Measurement and modelling of regional or country-level carbon dioxide (CO<sub>2</sub>) fluxes are becoming critical for verification of the greenhouse gases emission control. One of the commonly adopted approaches is inverse modelling, where CO<sub>2</sub> fluxes (emission: positive flux, sink: negative flux) from the terrestrial ecosystems are estimated by combining atmospheric CO<sub>2</sub> measurements with atmospheric transport models. The inverse models assume anthropogenic emissions are known, and thus the uncertainties in the emissions introduce systematic bias in estimation of the terrestrial (residual) fluxes by inverse modelling. Here we show that the CO<sub>2</sub> sink increase, estimated by the inverse model, over East Asia (China, Japan, Korea and Mongolia), by about 0.26 PgC year<sup>-1</sup> (1 Pg = 10<sup>12</sup> g) during 2001–2010, is likely to be an artifact of the anthropogenic CO<sub>2</sub> emissions increasing too quickly in China by 1.41 PgC year<sup>-1</sup>. Independent results from methane (CH<sub>4</sub>) inversion suggested about 41% lower rate of East Asian CH<sub>4</sub> emission increase during 2002–2012. We apply a scaling factor of 0.59, based on CH<sub>4</sub> inversion, to the rate of anthropogenic CO<sub>2</sub> emission increase since the anthropogenic emissions of both CO<sub>2</sub> and CH<sub>4</sub> increase linearly in the emission inventory. We find no systematic increase in land CO<sub>2</sub> uptake over East Asia during 1993–2010 or 2000–2009 when scaled anthropogenic CO<sub>2</sub> emissions are used, and that there is a need of higher emission increase rate for 2010–2012 compared to those calculated by the inventory methods. High bias in anthropogenic CO<sub>2</sub> emissions leads to stronger land sinks in global land–ocean flux partitioning in our inverse model. The corrected anthropogenic CO<sub>2</sub> emissions also produce measurable reductions in the rate of global land CO<sub>2</sub> sink increase post-2002, leading to a better agreement with the terrestrial biospheric model simulations that include CO<sub>2</sub>-fertilization and climate effects.

**Keywords:** East Asian carbon budget, Fossil fuel emission, Terrestrial biospheric uptake, Emission monitoring and verification

## Background

In order to combat global and regional climate change, efforts are being continued by the United Nations Framework Convention on Climate Change (UNFCCC) since the Kyoto Protocol (1996). The Paris Agreement (2015) during the 21st conference of parties (COP21; [www.un.org/sustainabledevelopment/cop21](http://www.un.org/sustainabledevelopment/cop21)), called for Intended Nationally Determined Contributions (INDCs) to greenhouse gases emission reduction to limit global

warming below 2 °C and as close to 1.5 °C as possible. However, the measure of INDCs varies by country, e.g. China, the largest emitter of anthropogenic CO<sub>2</sub> by fossil fuel consumption and cement production (FFC), targets to achieve ambitious 33.8% lower CO<sub>2</sub> emissions per unit of gross domestic product (GDP) in 2014 than the 2005 level, and the CO<sub>2</sub> emissions per GDP will be at 60% of the 2005 level by 2030 ([http://unfccc.int/focus/indc\\_portal/items/8766.php](http://unfccc.int/focus/indc_portal/items/8766.php)). On the other hand, developed nations declare straightforward reduction targets in total greenhouse gases (GHGs) emissions, e.g. the United States commits to a reduction of total GHG emission of 26–28% in 2025 compared to the 2005 levels, and Japan aims to reduce total GHG emissions by about 26%

\*Correspondence: [prabir@jamstec.go.jp](mailto:prabir@jamstec.go.jp)

<sup>1</sup> Department of Environmental Geochemical Cycle Research, JAMSTEC, Yokohama, Japan

Full list of author information is available at the end of the article

by 2030 compared to a base level of 2005–2013. To the best of our knowledge, no independent emission tracking system with sufficient accuracy exists today that can be employed for monitoring, reporting and verification (MRV) of the claimed emission reductions.

These committed emission reduction targets and their reference years demand for country-specific MRV systems that is supported by the national statistics and independent methods. The independent methods, such as the inverse modelling, suffer from lack of spatially and temporally uniform measurements, and from uncertainties in transport models (Gurney et al. 2002; Patra et al. 2006; Peylin et al. 2013). The other issue in inverse modelling is the separation of sources and sinks into component fluxes. Because the inversion system is ill-constrained by observations, only one component of the anthropogenic or terrestrial CO<sub>2</sub> fluxes can be optimized in state-of-the-art inverse models. The inverse models traditionally assume the anthropogenic CO<sub>2</sub> emission as a known quantity, which is calculated from better known industrial indicators, e.g. the GDP, FFC and energy intensity—energy consumed per unit of GDP. The terrestrial CO<sub>2</sub> exchange is lesser known compared to emissions due to FFC because of sparse inventories from forestry, unpredictable human intervention on land-use change, poor knowledge of environmental impacts on biospheric health, etc. If inverse modelling is adopted as one of the MRV systems for evaluating the progress of the Paris Agreement and INDCs, no assumption on the uncertainties in anthropogenic CO<sub>2</sub> emissions would be permitted.

Over the years, we have found it difficult to quantify uncertainties in FFC CO<sub>2</sub> emissions (Andres et al. 2012; Olivier et al. 2014), and the inverse modelling community is well informed about some of the interference on flux inversions (Gurney et al. 2005; Peylin et al. 2011). Clearly the maximum uncertainty in FFC CO<sub>2</sub> emissions is found for China (Guan et al. 2012; Liu et al. 2015; Korsbakken et al. 2016). A biased higher or lower FFC CO<sub>2</sub> emission will lead to artificially stronger (weaker) biospheric CO<sub>2</sub> sink over a given land region. In the recent times, the inverse model results are post-processed by applying a FFC CO<sub>2</sub> emission correction term (Peylin et al. 2013; Thompson et al. 2016). This method is a good approximation when biases in assumed FFC CO<sub>2</sub> emission only influence land CO<sub>2</sub> flux of the same region, but this is probably not the case because our regional fluxes are poorly constrained by observational data (Saeki et al. 2017; Thompson et al. 2016). However, the effect of high/low bias in the rate of FFC CO<sub>2</sub> emission increase on the decadal variations of inversion estimated terrestrial CO<sub>2</sub> uptake has not been discussed in detail (Patra et al. 2016a). Because the model transport biases do not vary significantly from year to year, our inversion systems can

better constrain the interannual/decadal variation in land fluxes compared to their magnitude, provided an accurate estimation of FFC CO<sub>2</sub> emissions is available.

Any wrong assumption on the growth rate of a priori FFC CO<sub>2</sub> emission is compensated by the land source or sink in such a way that detection of bias in a priori emission remained thus far elusive by validation approaches using independent aircraft CO<sub>2</sub> observations. This situation is different for species with predominantly terrestrial source, e.g. CH<sub>4</sub>, because the total emission can be well estimated by inverse model (atmospheric sink is parameterized separately and do not affect regional source inversion for the species with lifetime of several years). Patra et al. 2016b have used aircraft measurements over Sendai, Japan, to validate CH<sub>4</sub> emissions and emission increase rates for the East Asia region, and suggested that the rate of anthropogenic CH<sub>4</sub> emission increase should be only at 59% of that is estimated for 2002–2010 by the Emission Database for Global Atmospheric Research (EDGAR42FT; Olivier et al. 2014). About 75% of FFC CO<sub>2</sub> emissions and up to 40% of anthropogenic CH<sub>4</sub> emissions are caused due to the coal/oil industry (mining and burning), which have produced 82 and 72% of the increase in their emissions, respectively, in the period 2002–2010 (EDGAR42FT; <http://edgar.jrc.ec.europa.eu/overview.php?v=42FT2010>). Since the increase rate of CH<sub>4</sub> emissions over China is closely related to that of CO<sub>2</sub> emissions, we apply the CH<sub>4</sub> emission increase rate for correcting CO<sub>2</sub> emission increase rate.

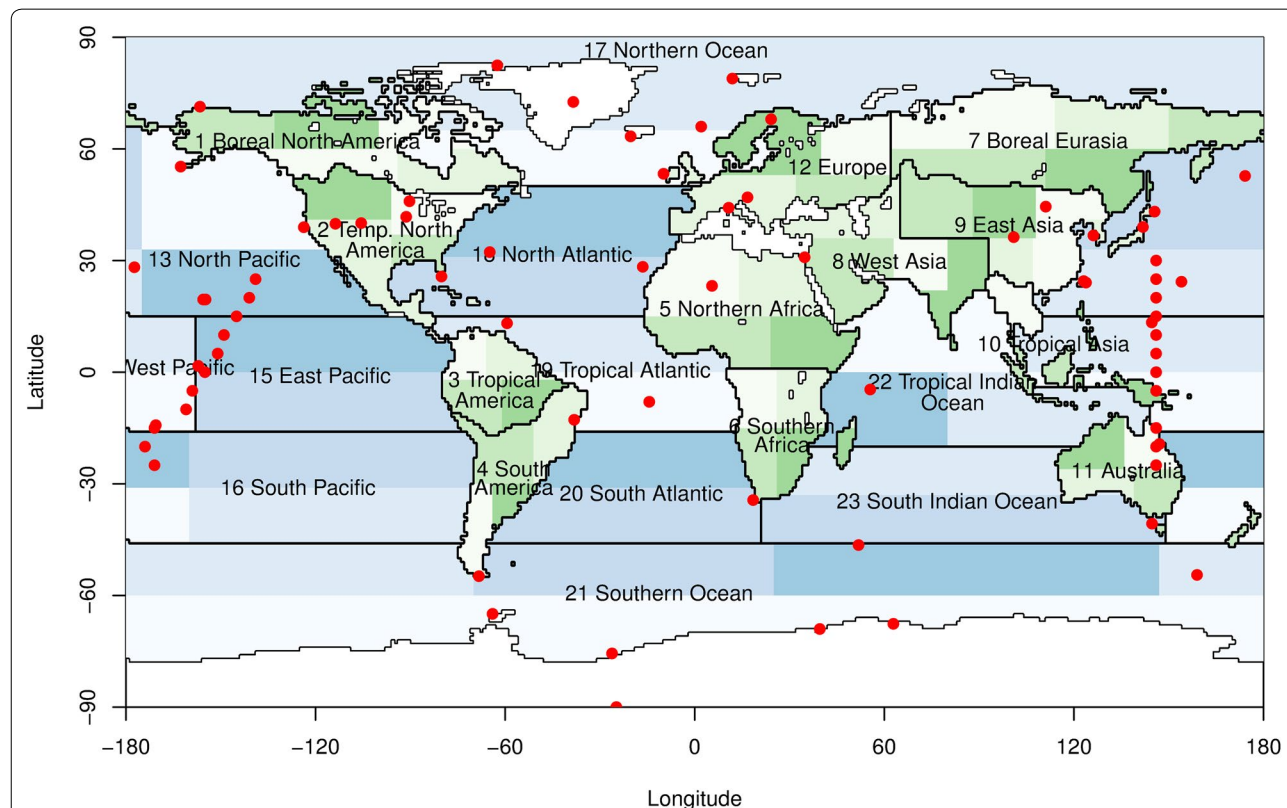
In this study, we have used results from three inversion cases, simulated using varied FFC CO<sub>2</sub> emissions, to illustrate the impacts of assumptions on a priori emissions on the estimated land CO<sub>2</sub> fluxes. The rate of a priori FFC CO<sub>2</sub> emission increase is then scaled by the reduced emission increase rate determined by CH<sub>4</sub> inversion. We show that the application of revised rate of FFC CO<sub>2</sub> emission increase leads to (1) no significant increase in CO<sub>2</sub> sink over the East Asia region after 2002, and (2) global land CO<sub>2</sub> sink increase agree better with that simulated by the global dynamic vegetation models (DGVMs). Implications of correct magnitude of FFC CO<sub>2</sub> emissions on land–ocean partitioning of global CO<sub>2</sub> sinks are also discussed.

## Methods

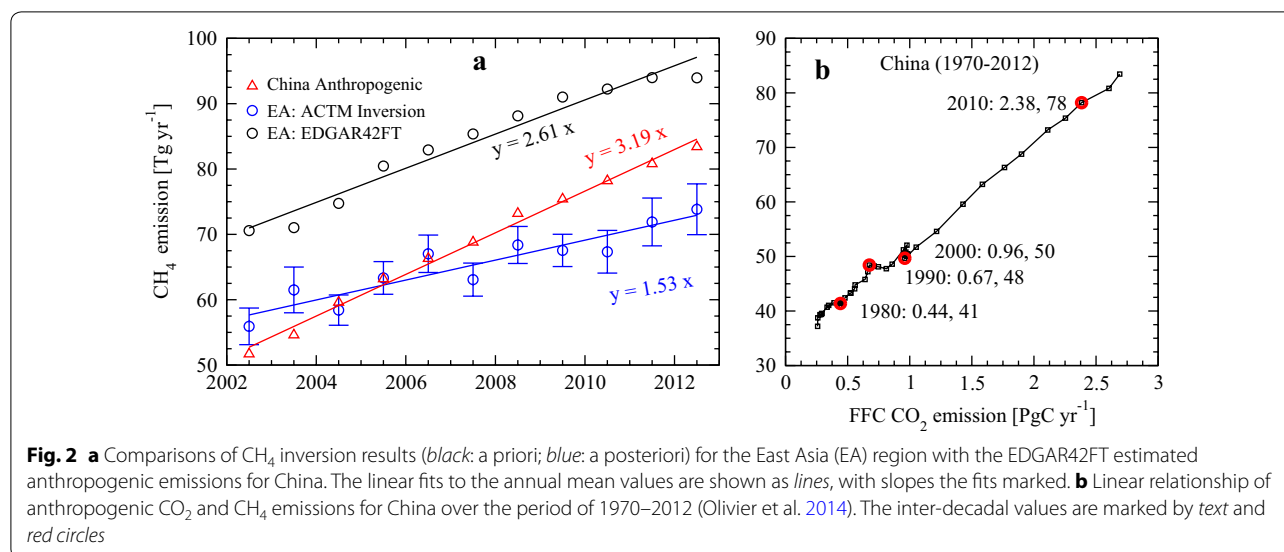
We have used FFC CO<sub>2</sub> emission maps from the (1) CDIAC: emissions of top-20 countries from CDIAC (Boden et al. 2016) distributed using EDGAR4 emission maps (2010 emission maps repeated for the latter years), (2) CARBONES: a project of the European Union (I. van der Laan-Luijckx, personal communication, 2015; as in Thompson et al. 2016; see also [www.carbones.eu/wcmqs/project/ccdas/#Fossil%20Fuel](http://www.carbones.eu/wcmqs/project/ccdas/#Fossil%20Fuel)),

and (3) CARBONES emission maps, but scaled with the IEA (International Energy Agency) emissions for South Asia, East Asia, Southeast Asia and rest of the world (as in Thompson et al. 2016; referred to as IEA). The global total FFC CO<sub>2</sub> emissions were 6.9, 6.8 and 6.6 PgC year<sup>-1</sup> in 2002, and 9.4, 9.1 and 8.5 PgC year<sup>-1</sup> in 2011, respectively, for the CDIAC, CARBONES and IEA inventories. CO<sub>2</sub> inversions are performed for 2001–2012 to optimize fluxes from 84 regions of the globe using the JAMSTEC’s atmospheric chemistry-transport model (ACTM) and CO<sub>2</sub> observations from 66 sites taken from GLOBALVIEW-CO<sub>2</sub> (2013) data products (Ref. Saeki et al. 2017 for more details; Thompson et al. 2016). The region divisions of 84-region inverse model and location of CO<sub>2</sub> measurement sites are depicted in Fig. 1. Apart from the FFC CO<sub>2</sub> emissions, the net ecosystem exchange (NEE) of terrestrial biosphere is taken from Carnegie-Ames-Stanford Approach (CASA) terrestrial biosphere model (Randerson et al. 1997), and oceanic exchanges are taken from Takahashi et al. (2009). ACTM inversion results for 2002–2011 are presented here after discarding the first and last year of inversions as spin-up and spin-down, respectively.

Similarly, CH<sub>4</sub> inversions are performed for 53-land regions only, using ACTM forward simulations and atmospheric data from 37 sites (see Patra et al. 2016b for details). The regional CH<sub>4</sub> emissions for the East Asia region are taken as the mean of their five ensemble cases, which have passed the post-inversion validation test using independent aircraft measurements by Tohoku Univ (Umezawa et al. 2014). The inversion ensemble members are based on different a priori emission scenarios. The EDGAR42FT inventory, used as a priori, suggested an increase of 23.4 Tg-CH<sub>4</sub> emissions from East Asia, which is contributed entirely by the anthropogenic emission increase rate in China. The validation exercise using independent aircraft measurement over Sendai by Tohoku University permitted an increase of about 16.1 Tg-CH<sub>4</sub> during the period of 2002–2012. For a robust estimation of a posteriori to a priori emissions scaling factor, we applied linear fits to the data (Fig. 2a). Here we will apply a scaling factor of 0.59 (=1.53/2.61; slopes of the linear fits for a posteriori and a priori emissions in Fig. 2a) to FFC CO<sub>2</sub> emission “increase rate” for the period 2003–2014, relative to the emissions for 2002 from CDIAC inventory, using the slopes of the fitted lines to



**Fig. 1** Maps of CO<sub>2</sub> inversion regions (54 land and 30 ocean; shaded) and atmospheric observation network (circle) with mostly surface sites, except for the Japan AirLines (JAL) flight track between Tokyo and Sydney/Brisbane. The snow-covered (zero flux) Antarctica and Greenland are not optimized by the inversion system. The CH<sub>4</sub> inverse model solves for emissions from 53 land only regions (1 region less in the Southeast Asia; ref. Patra et al. 2016b)



the East Asian CH<sub>4</sub> emission time series. A comparison of East Asian total CH<sub>4</sub> emissions with the anthropogenic CH<sub>4</sub> emissions from China suggests the dominating role of China for recent emission increases over the East Asia region. The application of this CH<sub>4</sub>-inversion-derived scaling factor to the CO<sub>2</sub> emission increase rate assumes constant CH<sub>4</sub>/CO<sub>2</sub> emission ratio over the periods of our analyses, and is deemed valid as per the linearity maintained in anthropogenic emission inventories of CO<sub>2</sub> and CH<sub>4</sub> over the period of 1970–2012 (EDGAR4; Fig. 2b).

We have used DGVM model simulated CO<sub>2</sub> fluxes from the Trends and drivers of the regional-scale sources and sinks of carbon dioxide (TRENDY) project, covering the period of 1990–2012. The DGVMs account for the effect of CO<sub>2</sub> fertilization and climate variations (simulation case S2; Sitch et al. 2015). Inverse model estimated ensemble mean CO<sub>2</sub> fluxes for East Asia for the period of 1993–2012 are taken from Thompson et al. (2016).

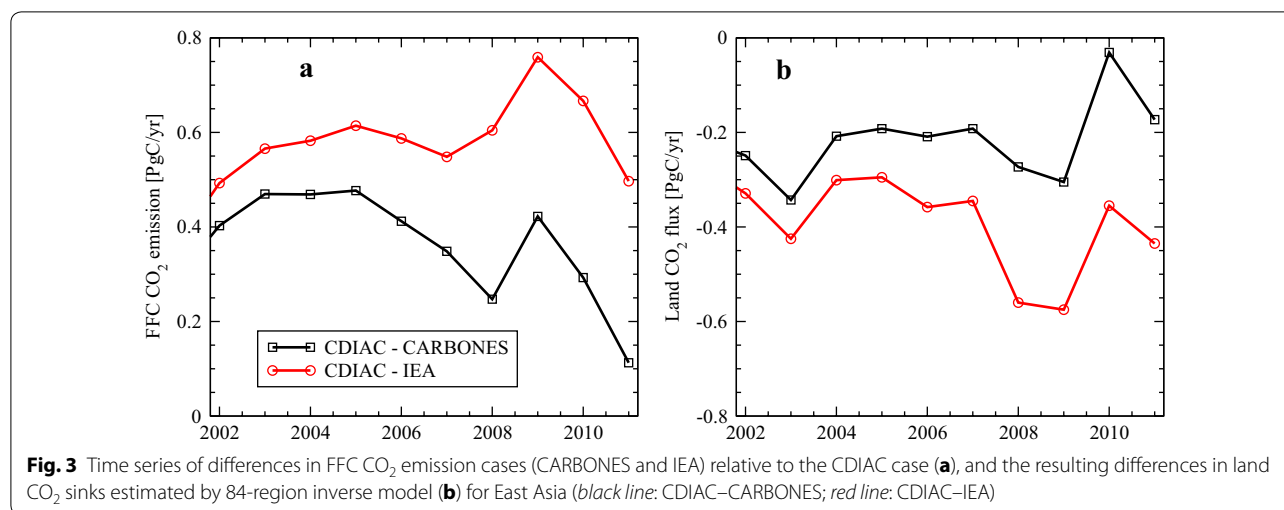
## Results and discussion

This topic of discussion is most relevant for the East Asia region because the global FFC CO<sub>2</sub> emission increase rate in the 2000s is mainly driven by the industrial CO<sub>2</sub> emission from China (about 65% of 2.17 PgC year<sup>-1</sup> increase in global emission during 2001–2010). Because our inverse model does not well constrain CO<sub>2</sub> fluxes from China alone, due to lack of measurement sites within the source regions (Fig. 1), we aggregated six inverse model regions to discuss the change in fluxes over East Asia in this study over the past 2 decades.

Figure 3 shows the effect of different FFC CO<sub>2</sub> emission a priori on the estimation of residual land CO<sub>2</sub> fluxes estimated by the 84-region inverse model for the

East Asia region. We find the FFC CO<sub>2</sub> emissions as per the CDIAC inventory method are always higher compared to the CARBONES and IEA inventories, varying from 0.49 PgC in 2002 to a maximum of 0.76 in 2009 for CDIAC–IEA. The CDIAC–CARBONES differences decrease from a maximum of 0.47 in 2003 to 0.12 PgC in 2011 (Fig. 3a). A fairly compensatory land CO<sub>2</sub> fluxes are estimated for the East Asia region with the inter-annual variations (IAVs) being opposite in phase. The mean ( $\pm 1\text{-}\sigma$  standard deviations for the IAVs) differences of  $0.59 \pm 0.08$  and  $0.37 \pm 0.12$  PgC in FFC CO<sub>2</sub> emissions lead to a mean uptake bias over the East Asia by  $-0.40 \pm 0.10$  and  $-0.21 \pm 0.08$  PgC, respectively, for the 2002–2011 period. This suggests about 60–67% of the FFC CO<sub>2</sub> emission bias is transferred to land uptake increase for the East Asia region, and the rest of 33–40% of FFC CO<sub>2</sub> bias affects inverse model results for other regions.

It would have been ideal to validate the a posteriori land CO<sub>2</sub> fluxes using aircraft (independent) observations that are not used in the inversion system, as in the case of inverted CH<sub>4</sub> emissions using vertical profiles over Sendai, Japan (Patra et al. 2016b). Such validation has also been attempted in Thompson et al. (2016), but large model–model differences in annual mean land fluxes for the East Asia region could not be separated using aircraft observations over Korea and Japan. Both the ACTM and MACC models with East Asian land fluxes of  $-0.94$  and  $-0.44$  PgC year<sup>-1</sup>, respectively, for 2008–2011 well-simulated the CO<sub>2</sub> concentration within the planetary boundary layer and vertical gradients between 1 and 4 km (Thompson et al. 2016; their Fig. 2). Unlike CH<sub>4</sub>, which has sources predominantly on the Earth's surface

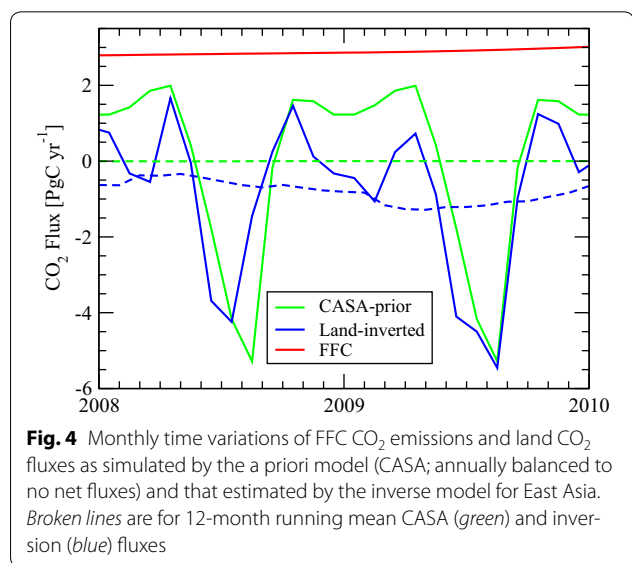


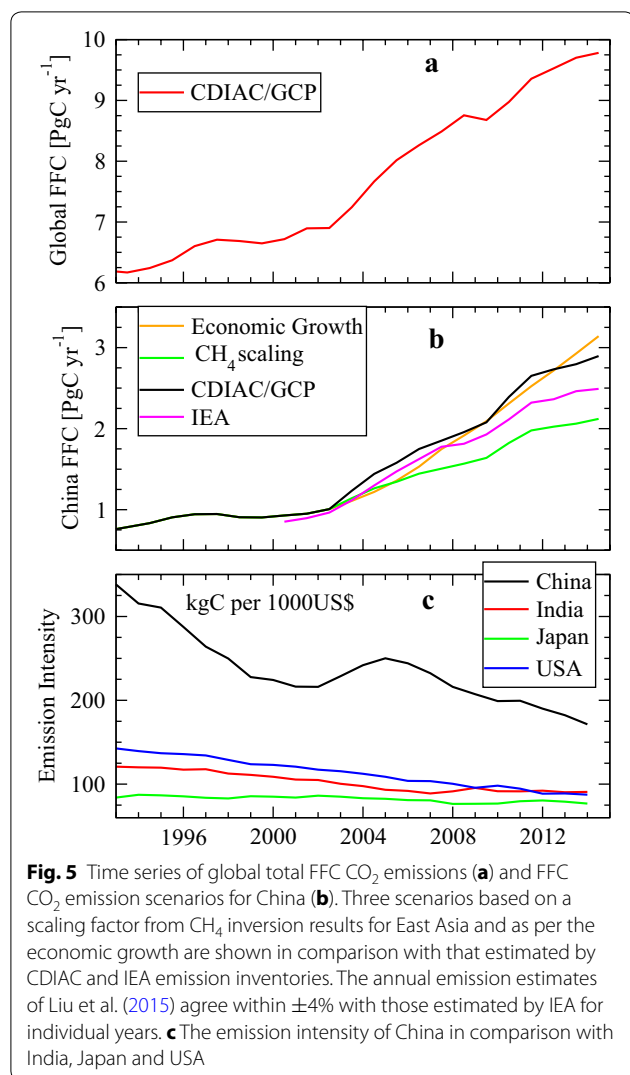
(a global surface sink of  $\sim 27 \text{ Tg-CH}_4 \text{ year}^{-1}$ , compared to  $\sim 550 \text{ Tg-CH}_4 \text{ year}^{-1}$  of emission), CO<sub>2</sub> has very strong source-sink variations over the land regions (Fig. 4). The annual mean biases for FFC CO<sub>2</sub> emissions or land fluxes are much smaller than the seasonal variations in land CO<sub>2</sub> exchange. In addition, our inversion system optimizes land-CO<sub>2</sub> fluxes for a given FFC CO<sub>2</sub> emission, where the inverted land fluxes can compensate for biases in an a priori FFC CO<sub>2</sub> emission. Such a compensatory effect helps to simulate observed CO<sub>2</sub> concentrations from aircrafts for very different source (FFC) and sink (land biosphere) combinations.

Figure 5 shows the quickest FFC CO<sub>2</sub> emission increase in China is seen during 2003–2006 coincides well with the worsening emission intensity (CO<sub>2</sub> emission per GDP produced), as used in preparation of EDGAR emission

inventories (Olivier et al. 2014). The FFC CO<sub>2</sub> emissions increase from China alone explains about 62% (1.72 out of 2.62 PgC year<sup>-1</sup>) global FFC emission increase in the period of 2002–2011 (Fig. 5a, b). In 2002–2003, the rate of FFC CO<sub>2</sub> emission increase ( $\sim 20\% \text{ year}^{-1}$ ) from China was twice its GDP growth rate ( $10\% \text{ year}^{-1}$ ). The CO<sub>2</sub> emission increase is caused by a combined effect of fuel consumption and worsening emission intensity, from 216 kgC per thousand US\$ in 2002 to 250 kgC per thousand US\$ in 2005 (Fig. 5c). Note also that the emission intensity of China was about three and two times higher in 2002 and 2012, respectively, compared to those of India, Japan or USA. Given the available historical information, it is probably difficult to revise the inventory emissions retrospectively for the first half of the 2000s. Therefore we apply a CH<sub>4</sub> emission scaling factor of 0.59 to the rate of anthropogenic CO<sub>2</sub> emission increase for China (Ref. Fig. 2a and associated text). By taking into account the sequestered CO<sub>2</sub> in carbonating cement materials (Xi et al. 2016), the FFC CO<sub>2</sub> emission increase would be moderated by 0.09 PgC in the period 2002–2012, which is about 12% of the mismatch in FFC CO<sub>2</sub> emissions between CDIAC/GCP and this study in 2012 (Fig. 5).

The FFC CO<sub>2</sub> emissions, before and after CH<sub>4</sub> emission scaling, are compared with a scenario when the emissions are assumed to increase as per the GDP increase rate of China. This suggest that until about 2009, the FFC CO<sub>2</sub> emission increase was faster than the GDP increase since 2003, while the scaled emission increase is still higher than that due to the GDP increase but until about 2006. The emission intensity probably improved at a faster rate leading to the Beijing Olympic in 2008 and the years that followed (ref. EDGAR42FT). Thus, the net FFC CO<sub>2</sub> emission increase during 2003–2014 at the rate of GDP increase is in apparent violation of the





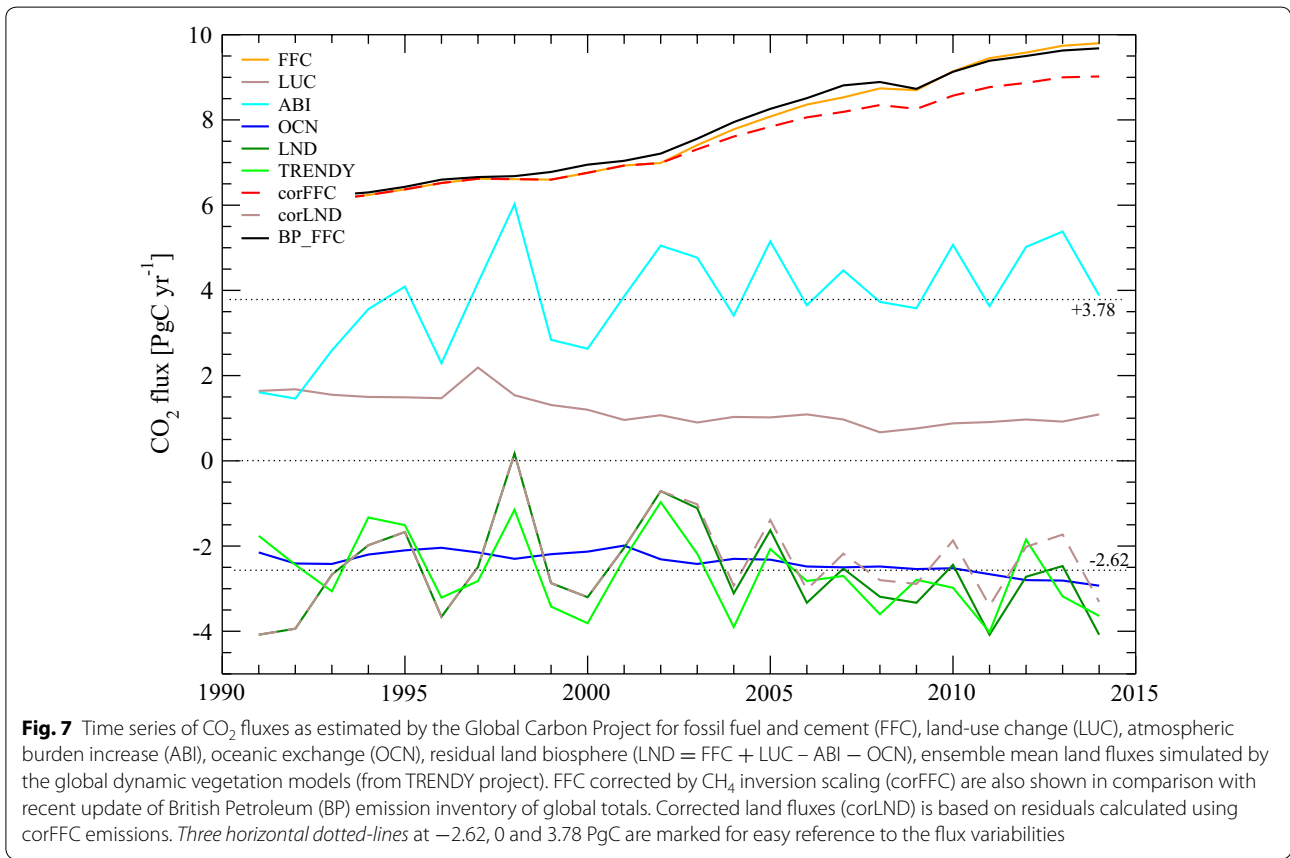
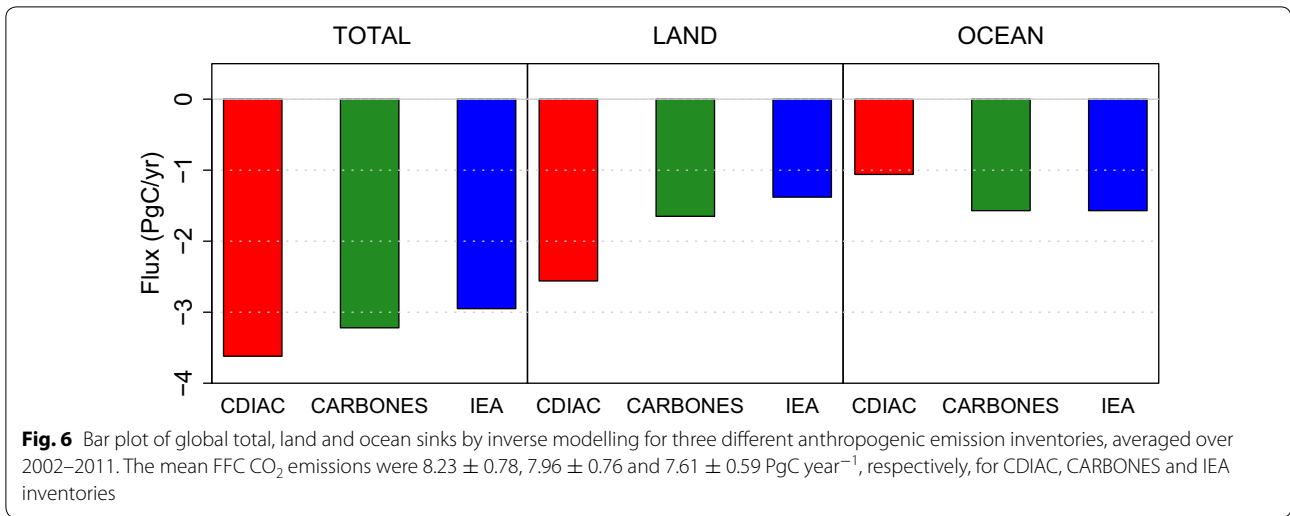
common development mechanism of industrialization (Kaya Identity; Kaya and Yokoburi 1997). Emissions per unit of GDP should decrease with time as the industries strive to improve productivity, and more energy is produced through green technology investments (Rau-pach et al. 2007). About 20.3% of total energy generated in China (4.994 PWh) has been by renewable energy in 2012 compared to that of 17.6% (of 1.654 PWh) in 2002 (IEA, International Energy Agency 2016; [www.iea.org/statistics/statisticssearch/](http://www.iea.org/statistics/statisticssearch/)). About 79 and 83% of China's energy is generated from coal and crude oil in 2002 and 2012, respectively, which constitute about 89 and 87% of its total CO<sub>2</sub> emissions (IEA 2016; Boden et al. 2016).

Choosing different time periods, we find that the rate of FFC CO<sub>2</sub> emission increase (1.04 PgC as per CDIAC) is about 75% of Chinese GDP increase during 2007–2014, and our revised emissions are about 64% of the economic

growth for another time period of 2002–2011. As a sensitivity case, we have checked the calculation for an arbitrary scaling factor of 0.69, and that produced an FFC CO<sub>2</sub> emission of 2.19 PgC year<sup>-1</sup> in 2012 compared to the case presented here with 2.02 PgC year<sup>-1</sup>. This maximum difference of 0.17 PgC year<sup>-1</sup> in East Asian CO<sub>2</sub> flux during the period of 2010–2012 (Fig. 8) does not affect most of the conclusions of this work, and the difference is much smaller than that derived using CDIAC FFC emissions (0.71 PgC year<sup>-1</sup>). Our revised FFC CO<sub>2</sub> emissions show better agreement, compared to CDIAC, with a consumption-based emission inventory for China (Fig. 5b; IEA 2016). The difference between IEA and our revised FFC CO<sub>2</sub> emissions has developed during the period of 2003–2007, when the emission intensity worsened for China, and only a systematic bias is seen for the later 5 years.

This correction to Chinese FFC CO<sub>2</sub> emission increase after 2003 has large consequences for the global and regional CO<sub>2</sub> budgets. Figure 6 shows the 84-region inverse model estimated global CO<sub>2</sub> fluxes using three cases of FFC CO<sub>2</sub> emissions as described in “Methods”. The FFC CO<sub>2</sub> emissions are balanced well by the residual/inverted land sink estimation for simulating the global atmospheric burden increase, which is seen as the greatest and smallest global total sinks for CDIAC and IEA, respectively (further details in Saeki et al. 2017). More interesting is to note that the CO<sub>2</sub> land sink is greater by 1.18 PgC year<sup>-1</sup> for CDIAC case compared to IEA emission case, and that is at the expenses of a large reduction in oceanic CO<sub>2</sub> sink by 0.51 PgC year<sup>-1</sup>. This is because the FFC CO<sub>2</sub> biases are located over the land region, and thus the compensatory sink biases in inverse model occur over the land regions when constrained by observations. Some leakage of FFC CO<sub>2</sub> is expected, e.g. 33–40% for the East Asia region, as most of the FFC CO<sub>2</sub> emission signals are not strongly constrained by measurements within the region. The bias in global total CO<sub>2</sub> fluxes for the CARBONES and IEA inversion cases arises from the land total alone, with the ocean total sinks being similar. Our results clearly suggest that the land–ocean partitioning of CO<sub>2</sub> sinks is affected greatly by the uncertainties in FFC CO<sub>2</sub> a priori emissions, which was more often linked to transport model uncertainties (Gurney et al. 2002; Peylin et al. 2013).

Further, the land CO<sub>2</sub> sink bias due to uncertainties in FFC CO<sub>2</sub> emission should influence our understanding of the global and regional carbon budgets. Figure 7 shows sectorial CO<sub>2</sub> sources/sinks budget obtained from the Global Carbon Project (GCP; Le Quéré et al. 2015). The GCP estimated global land CO<sub>2</sub> sink depends on the FFC CO<sub>2</sub> inventory, model of land-use change emissions



and atmospheric burden increase from measured CO<sub>2</sub> concentration. We corrected the global FFC CO<sub>2</sub> emission using scaled emissions for China only (broken red line; =Global – CDIAC China + CH<sub>4</sub>-Scaled China), and correspondingly calculated the corrected land CO<sub>2</sub>

sink (broken brown line; Fig. 7). Apparently, the recent release of CO<sub>2</sub> emission inventory by the British Petroleum (BP 2016) also suggested a slower emission increase during 2007–2014, compared to the CDIAC inventory, and is comparable to our corrected FFC CO<sub>2</sub> emission.

However, the rate of BP emission increase is still slightly faster than CDIAC inventory and much faster than our corrected FFC emission for the problematic time period of 2002–2007. The higher emissions during the late 1990s in the latest BP emission inventory, compared to CDIAC, agree better with Francey et al. (2013), who suggested no stabilization of emissions during the period 1996–1999.

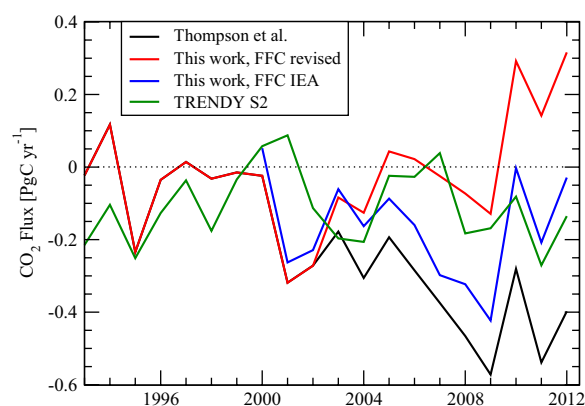
The corrected FFC CO<sub>2</sub> emissions may also help resolve one of the mismatches in the GCP's residual land CO<sub>2</sub> sink budget and ensemble mean of the TRENDY DGVM simulations. A comparison suggests the GCP land sink increased by 2.04 PgC during the period 2001–2014, while that increased by only 1.34 PgC in the case of the TRENDY S2 simulation. The revised GCP land sink, using corrected FFC CO<sub>2</sub> emissions, is calculated to be 1.27 PgC, which is in closer agreement with the TRENDY simulation (Fig. 7). The assessment of the CO<sub>2</sub> sink simulation, by the DGVMs, has large implications for future prediction of carbon–climate feedback.

The policymaking of emission mitigation or verifying the success of INDCs, towards reduction of global levels of GHGs concentration, rely on our ability to estimate the time evolution of regional sources and sinks. However, estimations of FFC CO<sub>2</sub> emissions and the land sink in China has been one of most discussed issues in recent times (Liu et al. 2015; Thompson et al. 2016; Jiang et al. 2016). Jiang et al. (2016) estimated a large sink in China's terrestrial biosphere, in the range of 0.39–0.51 PgC year<sup>-1</sup> for the period 2006–2009, which agrees well with the ensemble mean CO<sub>2</sub> sink of 0.46 PgC year<sup>-1</sup> estimated by Thompson et al. (2016). Strong regional CO<sub>2</sub> sink over a short period of time is in no apparent contradiction with our state-of-the-art knowledge, when all the component fluxes have uncertainties. However, we are unable to propose a simple biospheric mechanism for increasing CO<sub>2</sub> uptake systematically by 0.26 PgC within a decade in East Asia, from a mean flux of  $-0.20 \text{ PgC year}^{-1}$  in 2000–2002 to  $-0.46 \text{ PgC year}^{-1}$  in 2009–2011. The CO<sub>2</sub> uptake increase of similar amount is also calculated over a longer time period, from  $0.08 \pm 0.14$  (mean  $\pm 1\text{-}\sigma$  for IAVs) PgC year<sup>-1</sup> during 1993–2002 to  $0.36 \pm 0.14 \text{ PgC year}^{-1}$  during 2003–2012. The corrected CO<sub>2</sub> uptakes for the same periods are calculated as  $0.08 \pm 0.14$  and  $0.03 \pm 0.16 \text{ PgC year}^{-1}$ , respectively, using the CH<sub>4</sub>-scaled FFC CO<sub>2</sub> emissions.

The TRENDY S2 simulation, including CO<sub>2</sub> fertilization and climate effects, produced CO<sub>2</sub> uptakes of  $0.09 \pm 0.11$  and  $0.13 \pm 0.10$ , respectively, for the periods 1993–2002 and 2003–2012 (Fig. 8). The TRENDY simulations showed excellent agreement with inversion results for a slower rate of FFC CO<sub>2</sub> emission increase for both the interannual variations and sink magnitudes, except for magnitudes during 2010–2012. These CO<sub>2</sub> uptakes

are also in good agreement with the average biomass carbon sink of 0.17 PgC year<sup>-1</sup> during 1999–2008, estimated based on forest stands inventory in China (Zhang et al. 2013), or the net carbon sink in the range of 0.19–0.26 PgC year<sup>-1</sup> using inventory, biogeochemical models and inverse models (Piao et al. 2009).

The anomalously high East Asian emission of  $\sim 0.2 \text{ PgC year}^{-1}$  during 2010–2012 is likely to arise from an underestimation of the rate of FFC CO<sub>2</sub> emission increase. Although the Chinese economic growth showed no sign of slowing down, the CDIAC estimated FFC CO<sub>2</sub> emission showed sharp decrease in the rate of emission increase since 2011 (Fig. 5). As per the Chinese economic growth, a proportional increase in FFC CO<sub>2</sub> emission would raise the emission by 0.3 PgC in the period 2009–2012. The proposed emission increase is consistent with one of the scenarios in Korsbakken et al. (2016), i.e. the National apparent consumption (pre-third National Economic Census, NEC) and that of the IEA. The a posteriori CH<sub>4</sub> emissions also show continued increase during the years 2010–2012 (Fig. 2a, blue line). The use of FFC CO<sub>2</sub> emissions from IEA show excellent agreement between corrected land sinks and the TRENDY simulation for the period 2010–2012, but produced a too strong sink increase during 2005–2009 (Fig. 8). Resolving the rate of increase in FFC CO<sub>2</sub> emission from China for different time segments is beyond the scope of this work. We believe large investment is required to develop independent MRV system involving atmospheric measurement and model for tracking CO<sub>2</sub> emissions from industrial and biospheric activities.



**Fig. 8** Effect of FFC CO<sub>2</sub> emission increase rate on regional carbon budget of East Asia. The mean inversion flux of East Asia (from Thompson et al. 2016) is corrected a posteriori for revised China FFC CO<sub>2</sub> emissions using scaling from CH<sub>4</sub> inversion (This work, FFC revised) and that from the IEA (This work, FFC IEA). The mean CO<sub>2</sub> exchange simulated by TRENDY DGVMs (S2 simulation) are also shown



## Conclusions

We have shown that the large land CO<sub>2</sub> uptake increase by 0.26 PgC year<sup>-1</sup> during 2001–2010, estimated for the East Asia by recent inverse modelling studies, is likely to be caused by a possible overestimation of increase rate in ‘assumed’ anthropogenic CO<sub>2</sub> emissions. Unfortunately, the FFC CO<sub>2</sub> emission and land sink dipole remained unresolved by validation experiments using independent CO<sub>2</sub> data. However, the CH<sub>4</sub> inversion results (predominantly source) showed an overestimation of anthropogenic emissions from East Asia, mainly China (Patra et al. 2016b). The strong correlation in anthropogenic emissions of CO<sub>2</sub> and CH<sub>4</sub> for the period 1970–2012 (Olivier et al. 2014) provides evidence for a reduction in the rate of FFC CO<sub>2</sub> emission increase by a factor of 0.59 for the period of 2002–2012. These results have large implications for carbon emission mitigation target, and development of MRV systems (e.g. for the INDCs). One fixed scaling factor of 0.59 for anthropogenic CO<sub>2</sub> emission for the period 2002–2012 is found to be inappropriate in this study. The flattening of FFC CO<sub>2</sub> emission after about 2009 in our revised case (Fig. 2a, black circle) is apparently inconsistent with the consumption-based emission inventories, and implies that CO<sub>2</sub> emission continued to increase at similar rates between 2009 and 2012, which is consistent with China’s national apparent consumption of coal and IEA emissions. The continued increase in anthropogenic emissions for 2010–2012 is also suggested by the CH<sub>4</sub> inversion results. We need to evaluate applications of any such factor using different chemical tracers, probably at every 3–5 year time intervals.

The accuracy of net terrestrial CO<sub>2</sub> uptake should be established in relation with the a priori FFC CO<sub>2</sub> emissions. Currently, the FFC CO<sub>2</sub> emission inventories are largely unconstrained by independent observations. We show that a significant bias in a priori FFC emissions leads to an abrupt carbon uptake increase in the regional and global terrestrial ecosystem mainly, and partly affects the oceanic carbon uptake estimations. High biased FFC CO<sub>2</sub> emissions produced stronger land sinks in global land–ocean flux partitioning because the emission bias occurs mostly over the land and affect the residual sink estimation within the same region. In particular, a reduced rate of FFC CO<sub>2</sub> emission increase is suggested to produce an overall consistency between the inverse model estimated East Asian and global land uptake increases with those simulated by the terrestrial vegetation models for the time periods after 2002.

### Authors’ contributions

TS and PKP designed the model experiments, TS performed CO<sub>2</sub> inversions and major part of the analyses, PKP and TS wrote the paper. Both authors read and approved the final manuscript

### Author details

<sup>1</sup> Department of Environmental Geochemical Cycle Research, JAMSTEC, Yokohama, Japan. <sup>2</sup> Present Address: Center for Global Environmental Research, National Institute for Environmental Studies, Tsukuba, Japan.

### Acknowledgements

This work was first presented at the 13th Asia Oceania Geoscience Society (AOGS) annual meeting, Beijing, 2016. Authors thank Rona Thompson, Josep Canadell, Kazuhito Ichii, Masayuki Kondo for useful discussions while developing some of the concepts. The CARBONES and CARBONES-IEA fossil fuel CO<sub>2</sub> emission maps were reformatted for this study by Ingrid van der Laan-Luijkx. We thank three anonymous reviewers for providing us with insightful comments. The revised manuscript has also benefitted from discussions with Frederic Chevallier, Benjamin Poulter and Eri Saikawa.

### Competing interests

The authors declare that they have no competing interests.

### Availability of data and materials

CO<sub>2</sub> measurements are available for scientific use at <http://ds.data.jma.go.jp/gmd/wdcgg/>; <http://www.esrl.noaa.gov/gmd/dv/ftpdata.html>; <http://caos.sakura.ne.jp/tgr/>. All the model results and analysis tools are available unconditionally from the ACTM group by contacting the lead authors.

### Funding

This work is supported by the Environment Research and Technology Development Fund (2-1401) of the Ministry of the Environment, Japan, and Asia Pacific Network (APN) project ARCP2013-01CMY-Patra/Canadell. All model simulations are performed on JAMSTEC’s supercomputing facility in Yokohama.

### Publisher’s Note

Springer Nature remains neutral with regard to jurisdictional claims in published maps and institutional affiliations.

Received: 19 September 2016 Accepted: 3 April 2017

Published online: 16 May 2017

### References

- Andres RJ et al (2012) A synthesis of carbon dioxide emissions from fossil-fuel combustion. *Biogeosciences* 9:1845–1871. doi:10.5194/bg-9-1845-2012
- Boden T A, Marland G, and Andres R J (2016) Global, Regional, and National Fossil-Fuel CO<sub>2</sub> Emissions. In: Carbon Dioxide Information Analysis Center, Oak Ridge National Laboratory, U.S. Department of Energy, Oak Ridge, Tenn., U.S.A. doi: 10.3334/CDIAC/00001\_V2016
- BP (British Petroleum) Statistical Review of World Energy (2016) <http://www.bp.com/content/dam/bp/pdf/energy-economics/statistical-review-2016/bp-statistical-review-of-world-energy-2016-full-report.pdf>
- Francey RJ et al (2013) Atmospheric verification of anthropogenic CO<sub>2</sub> emission trends. *Nat Clim Change* 3:520–524. doi:10.1038/nclimate1817
- Guan D, Liu Z, Geng Y, Lindner S, Hubacek K (2012) The gigatonne gap in China’s carbon dioxide inventories. *Nat Clim Change* 2:672–675
- Gurney KR et al (2002) Towards robust regional estimates of CO<sub>2</sub> sources and sinks using atmospheric transport models. *Nature* 415:626–630
- Gurney KR, Chen Y-H, Maki T, Kawa SR, Andrews A, Zhu Z (2005) Sensitivity of atmospheric CO<sub>2</sub> inversions to seasonal and interannual variations in fossil fuel emissions. *J Geophys Res* 110:D10308. doi:10.1029/2004JD005373
- IEA, International Energy Agency (2016) <http://www.iea.org/statistics/topics/CO2emissions/>
- Jiang F et al (2016) A comprehensive estimate of recent carbon sinks in China using both top-down and bottom-up approaches. *Sci Rep* 6:22130
- Kaya Y, Yokobori K (1997) Environment, energy, and economy: strategies for sustainability. United Nations Univ Press, Tokyo. ISBN 9280809113
- Korsbakken JI, Peters GP, Andrew RM (2016) Uncertainties around reductions in China’s coal use and CO<sub>2</sub> emissions. *Nat Clim Change* 6:687–690. doi:10.1038/nclimate2963

- Le Quéré C et al (2015) Global carbon budget 2015. *Earth Syst Sci Data* 7:349–396. doi:[10.5194/essd-7-349-2015](https://doi.org/10.5194/essd-7-349-2015)
- Liu Z et al (2015) Reduced carbon emission estimates from fossil fuel combustion and cement production in China. *Nature* 524:335–338
- Olivier JGJ, Janssens-Maenhout G, Muntean M, Peters JAHW (2014) Trends in global CO<sub>2</sub> emissions: 2014 Report. PBL Netherlands Environmental Assessment Agency, The Hague; European Commission, Joint Research Centre (JRC), Institute for Environment and Sustainability (IES), JRC report 93171/PBL report 1490
- Patra PK et al (2006) Sensitivity of inverse estimation of annual mean CO<sub>2</sub> sources and sinks to ocean-only sites versus all-sites observational networks. *Geophys Res Lett* 33:L05814
- Patra PK, Canadell JG, Thompson RL, Kondo M, Poulter B (2016a) Sources and sinks of carbon dioxide in populous Asia. APN Project Reference: ARCP2013-01CMY-Patra/Canadell/. <http://www.apn-gcr.org/resources>
- Patra PK et al (2016b) Regional methane emission estimation based on observed atmospheric concentrations (2002–2012). *J Meteorol Soc Jpn* 94:91–113
- Peylin P et al (2011) Importance of fossil fuel emission uncertainties over Europe for CO<sub>2</sub> modeling: model intercomparison. *Atmos Chem Phys* 11:6607–6622. doi:[10.5194/acp-11-6607-2011](https://doi.org/10.5194/acp-11-6607-2011)
- Peylin P et al (2013) Global atmospheric carbon budget: results from an ensemble of atmospheric CO<sub>2</sub> inversions. *Biogeosciences* 10:6699–6720
- Piao SL et al (2009) The carbon balance of terrestrial ecosystems in China. *Nature* 458:1009–1013. doi:[10.1038/nature07944](https://doi.org/10.1038/nature07944)
- Randerson J et al (1997) The contribution of terrestrial sources and sinks to trends in the seasonal cycle of atmospheric carbon dioxide. *Glob Biogeochem Cycles* 11:535–560. doi:[10.1029/97GB02268](https://doi.org/10.1029/97GB02268)
- Raupach MR et al (2007) Global and regional drivers of accelerating CO<sub>2</sub> emissions. *Proc Natl Acad Sci USA* 104:10288–10293. doi:[10.1073/pnas.0700609104](https://doi.org/10.1073/pnas.0700609104)
- Saeki T et al. (2017) Decadal trends in regional CO<sub>2</sub> fluxes estimated from atmospheric inversions. **(in preparation)**
- Sitch S et al (2015) Recent trends and drivers of regional sources and sinks of carbon dioxide. *Biogeosciences* 12:653–679. doi:[10.5194/bg-12-653-2015](https://doi.org/10.5194/bg-12-653-2015)
- Takahashi T et al (2009) Climatological mean and decadal changes in surface ocean pCO<sub>2</sub>, and net sea-air CO<sub>2</sub> flux over the global oceans. *Deep-Sea Res II* 56:554–577
- Thompson RL et al (2016) Top-down assessment of the Asian carbon budget since the mid 1990s. *Nat Commun* 7:10724. doi:[10.1038/ncomms10724](https://doi.org/10.1038/ncomms10724)
- Umezawa T et al (2014) Variations of tropospheric methane over Japan during 1988–2010. *Tellus B* 66:23837. doi:[10.3402/tellusb.v66.23837](https://doi.org/10.3402/tellusb.v66.23837)
- Xi F et al (2016) Substantial global carbon uptake by cement carbonation. *Nat Geosci* 9:880–883. doi:[10.1038/ngeo2840](https://doi.org/10.1038/ngeo2840)
- Zhang CH et al (2013) China's forest biomass carbon sink based on seven inventories from 1973 to 2008. *Clim Change* 118:933–948. doi:[10.1007/s10584-012-0666-3](https://doi.org/10.1007/s10584-012-0666-3)

Submit your manuscript to a SpringerOpen<sup>®</sup> journal and benefit from:

- Convenient online submission
- Rigorous peer review
- Immediate publication on acceptance
- Open access: articles freely available online
- High visibility within the field
- Retaining the copyright to your article

---

Submit your next manuscript at ► [springeropen.com](http://springeropen.com)

---